



Manually Operated Directional Valves

Features:

1. High pressure, high capacity and wide range of flow rate.
2. Nominal diameter from 1/4" to 1-1/4", ISO standard mounting surface of gasket type.
3. Full ranges of spool type, long service life.



HOW TO ORDER

DM - G 02 - 2 B2 A - 20

Design No.	20	2090
Gasket	DIN 912 Bolt.	UNC Bolt.
Threading	PT Threading	NPT Threading
Special two position valve: None if not required.		
Spool Type		
C: Spring Centered		
B: Spring Offset		
D: No Spring, Detent		
No. of Valve Position		
2: 2 Position 3: 3 Position		
Nominal Diameter		
02: 1/4" 03: 3/8" 04: 1/2"		
06: 3/4" 10: 1-1/4"		
Connection Type		
G: Gasket T : Threading		
Manually Operated Directional Valve Series		

SPECIFICATIONS

Model No.	Max. Flow L/min				Max. Operating Pressure kgf/cm ²	Max. T-line Back Pressure kgf/cm ² External drain	Weight kg
	70 kgf/cm ²	140 kgf/cm ²	210 kgf/cm ²	315 kgf/cm ²			
DM-G02-3C ※ - ※	40	40	40	40	250	140	1.6
DM-G02-3D ※ - ※	40	40	40	40			
DM-G02-2D ※ - ※	40	40	40	40			
DM-G02-2B ※ - ※	40	40	40	40			
DM-G03-3C ※ - ※	100	100	100	100	250	160	4
DM-G03-3D ※ - ※							
DM-G03-2D ※ - ※							
DM-G03-2B ※ - ※							
DM-G06-3C ※ - ※	500	500	500	500	315	210	15
DM-G06-3D ※ - ※							
DM-G06-2D ※ - ※							
DM-G06-2B ※ - ※							
DM-T03-3C ※ - ※	100	100	100	100	250	160	5
DM-T03-3D ※ - ※							
DM-T03-2D ※ - ※							
DM-T03-2B ※ - ※							
DM-T04-3C ※ - ※	200	200	105	105	210	At spool shafting: 70 At no shafting: 210	7.3
DM-T04-3D ※ - ※	200	200	200	200			
DM-T04-2D ※ - ※	200	200	200	200			
DM-T04-2B ※ - ※	90	60	50	50			
DM-T06-3C ※ - ※	300(80)※ ¹	300(80)※ ¹	300(80)※ ¹	300(80)※ ¹	210	At spool shafting: 70 At no shafting: 210	12.4
DM-T06-3D ※ - ※	300	300	300	300			
DM-T06-2D ※ - ※	300	300	300	300			
DM-T06-2B ※ - ※	200	120	120	120			
DM-T10-3C ※ - ※	500(132)※ ¹	500(132)※ ¹	500(132)※ ¹	500(132)※ ¹	210	At spool shafting: 70 At no shafting: 210	12.4
DM-T10-3D ※ - ※	500	500	500	500			
DM-T10-2D ※ - ※	500	500	500	500			
DM-T10-2B ※ - ※	315	315	315	315			

Remark: The figures in parentheses indicated max. flow for 3C3, 3C5, 3C6, 3C60.



Manually Operated Directional Valves

LIST OF SPOOL

3 POSITIONS VALVES

Spool Type	Spring centered model graphic symbol	Spool Type	No spring, detented model graphic symbol
	(3C#) #1 #2 #3		3D #1 #2 #3
3C2		3D2	
3C3		3D3	
3C4		3D4	
3C40		3D40	
3C5		3D5	
3C6		3D6	
3C60		3D60	
3C7		3D7	
3C9		3D9	
3C10		3D10	
3C11		3D11	
3C12		3D12	

STANDARD 2 POSITIONS VALVES, SPRING OFFSET VALVES

Spool Type	Spring offset model graphic symbol	Spool Type	No spring, detented model graphic symbol
	(2B#) 2D #1 (#2) #3		2D #1 (#2) #3
2B2		2D2	
2B3		2D3	
2B4		2D4	
2B40		2D40	
2B7A		2D7	
2B8A		2D8	

SPECIAL 2 POSITIONS VALVES, SPRING OFFSET VALVES

Spool Type	Spring offset model graphic symbol	Spool Type	Spring offset model graphic symbol
2B2A		2B2B	
2B3A		2B3B	
2B4A		2B4B	
2B40A		2B40B	
2B5A		2B5B	
2B6A		2B6B	
2B60A		2B60B	
2B7A		2B7B	
2B8A		2B8B	
2B9A		2B9B	
2B10A		2B10B	
2B11A		2B11B	
2B12A		2B12B	

SPECIAL 2 POSITIONS VALVES, NO SPRING DETENTED VALVES

Spool Type	No spring, detented model graphic symbol	Spool Type	No spring, detented model graphic symbol
2D2A		2D2B	
2D3A		2D3B	
2D4A		2D4B	
2D40A		2D40B	
2D5A		2D5B	
2D6A		2D6B	
2D60A		2D60B	
2D7A		2D7B	
2D8A		2D8B	
2D9A		2D9B	
2D10A		2D10B	
2D11A		2D11B	
2D12A		2D12B	

Note: Not all spools are available in all types of valves. Please double check before ordering.

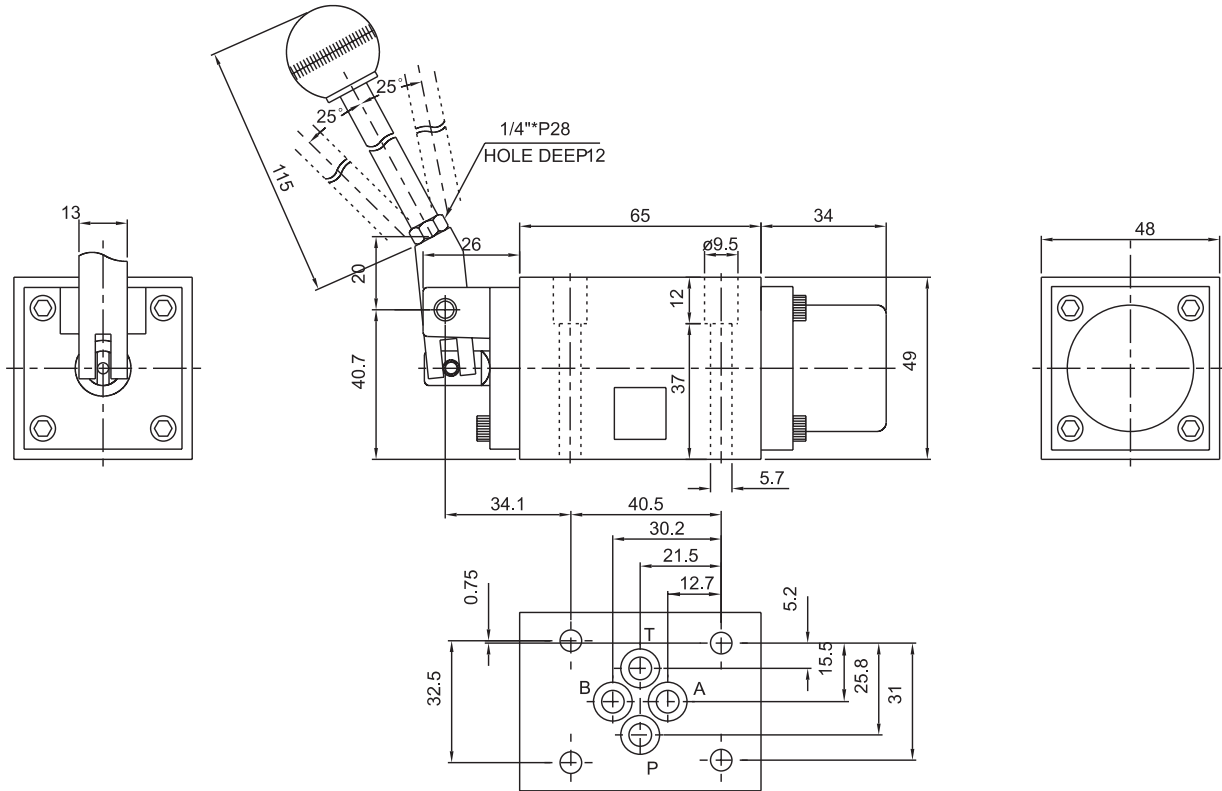


Manually Operated Directional Valves

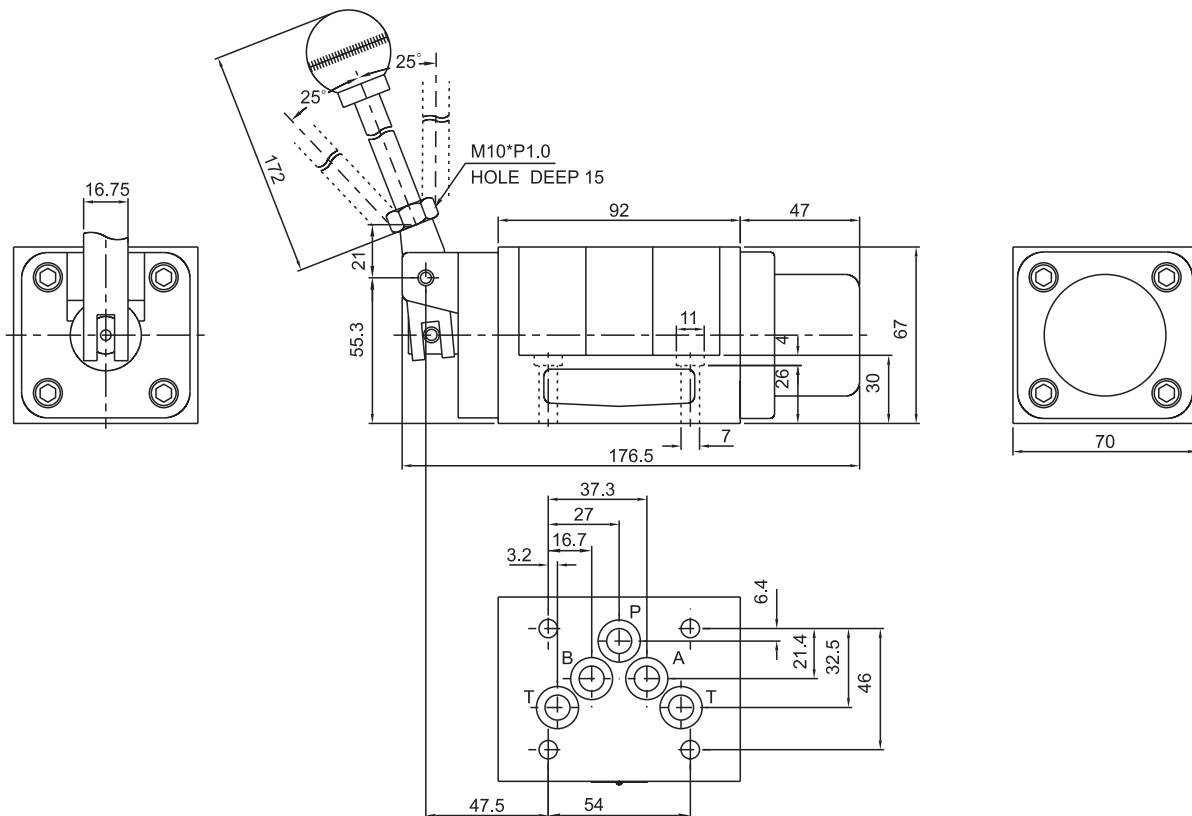
■ INSTALLATION DIMENSIONS:

UNIT: mm

DMG-02 Mounting Surface: ISO 4401-03-02-0-94



DMG-03 Mounting Surface: ISO 4401-05-04-0-94



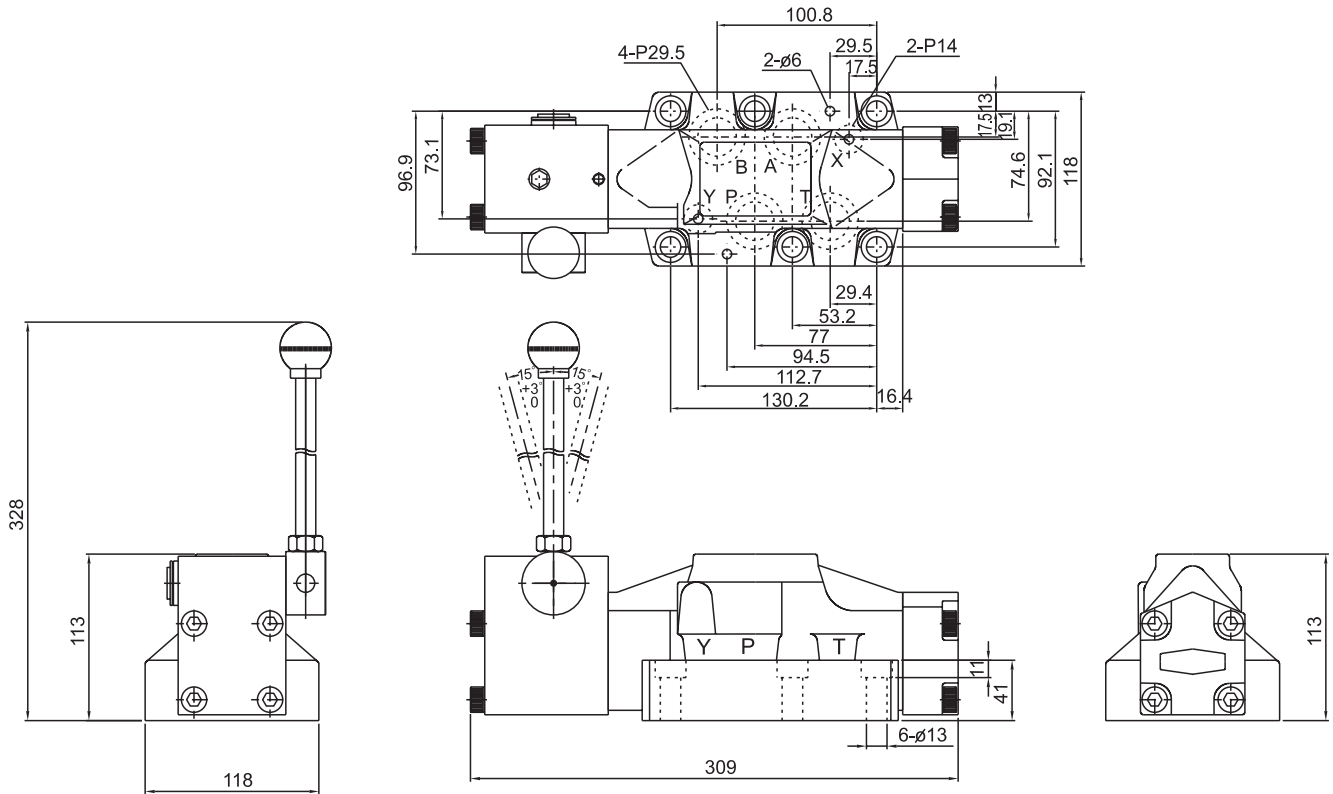


Manually Operated Directional Valves

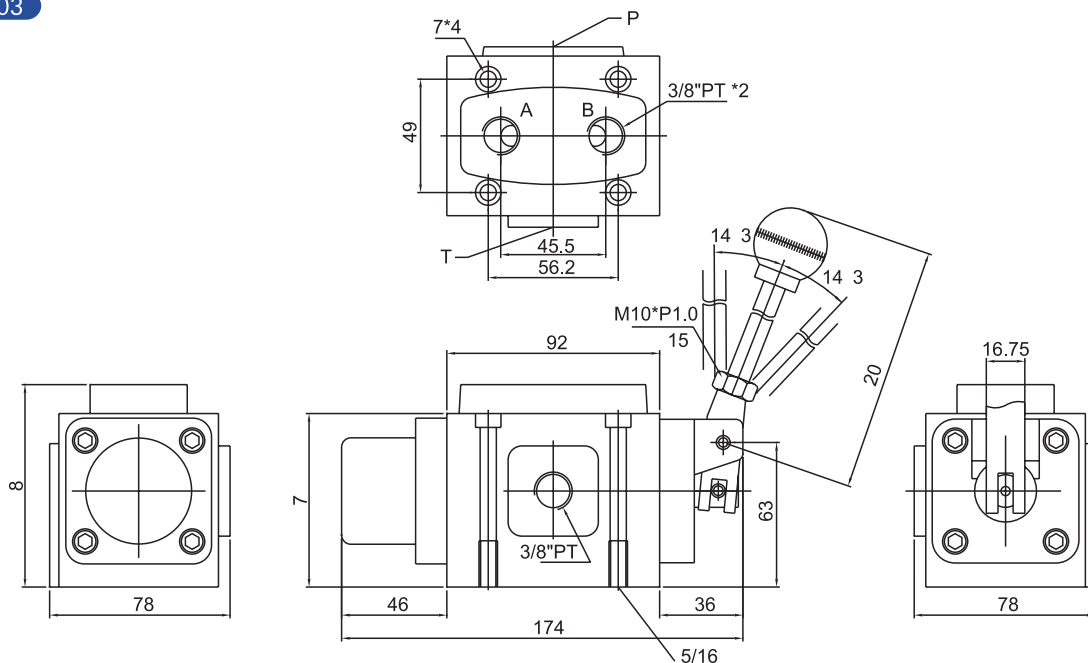
■ INSTALLATION DIMENSIONS:

UNIT: mm

DMG-06 Mounting Surface: ISO 4401-08-07-0-94



DMT-03



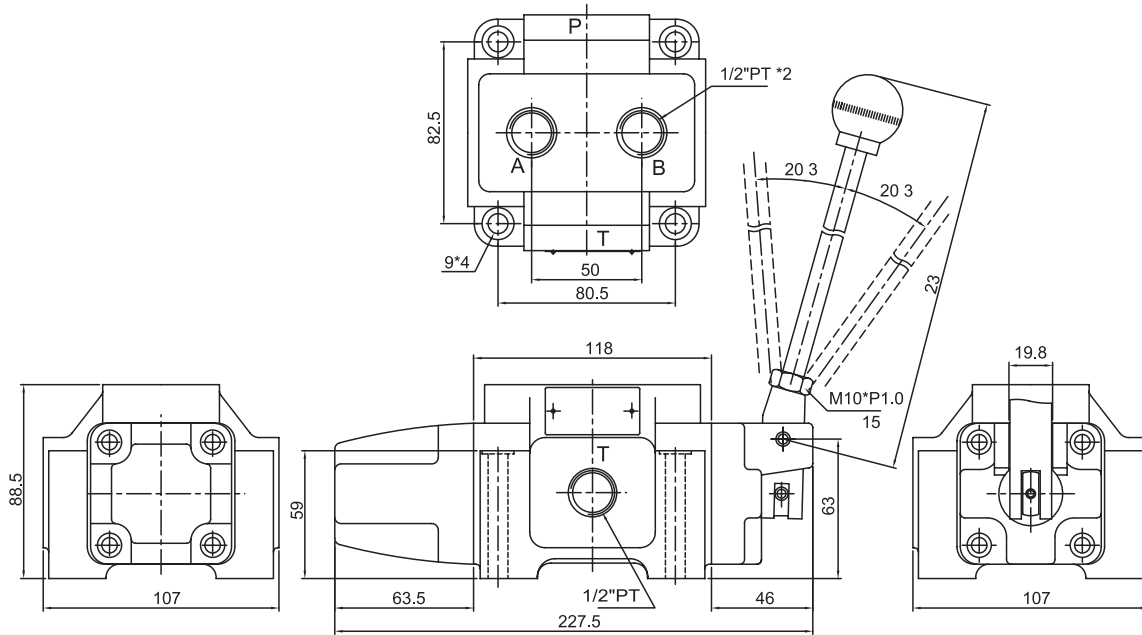


Manually Operated Directional Valves

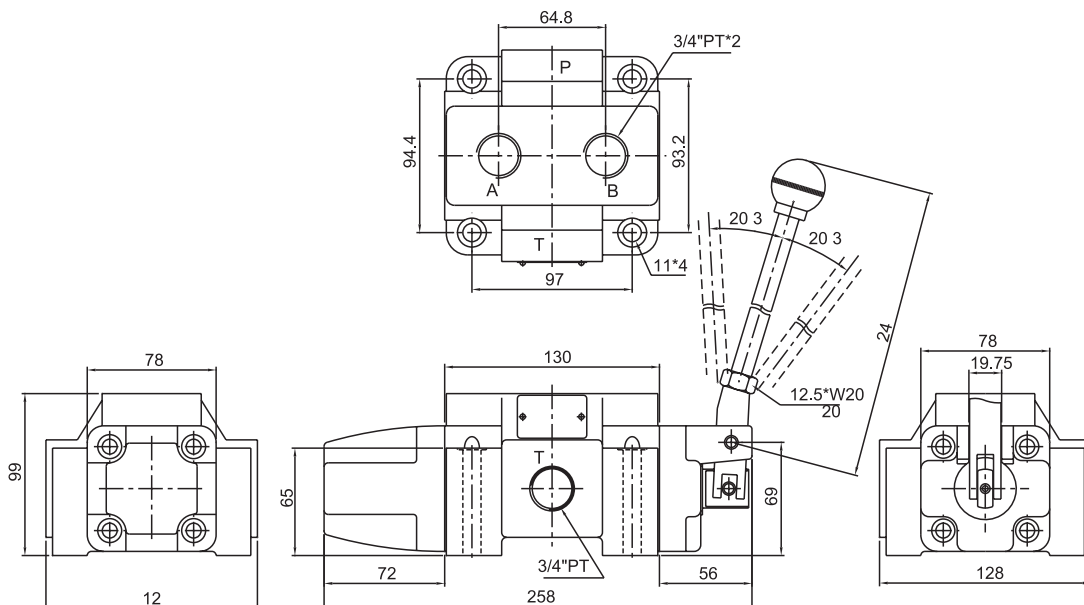
■ INSTALLATION DIMENSIONS:

UNIT: mm

DMT-04



DMT-06





Manually Operated Directional Valves

■ INSTALLATION DIMENSIONS:

UNIT: mm

DMT-10

